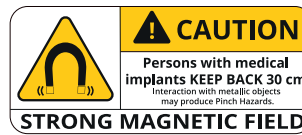


Modulate™ Straight 1520/1524

MOD-S-1520/1524

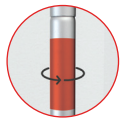
MOD-S-1520-HF/1524-HF



made in Poland

Modulate™ consists of a set of frames made from aluminium tubes (Ø30 mm) covered with a printed tension fabric graphic. These frames can be connected together using powerful magnets inside each frame. Modulate range is available in 11 different sized formats.

- Thanks to the exclusive **MagLink** magnetic system built into the structure, you can connect the frames by simply touching them together.
- With the **Twist & Lock** system, simply position the foot under the structure, turn it and it's locked!
- The graphics are very easy to maintain thanks to the crease-resistant and machine washable textile cover. Stretch fabric with zip system.



360° MagLink connector in each pole. 4 magnets per structure



400 mm extension included



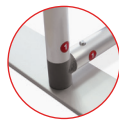
Central reinforcement tube (Ø 30 mm)



Simple assembly with numbered frame parts



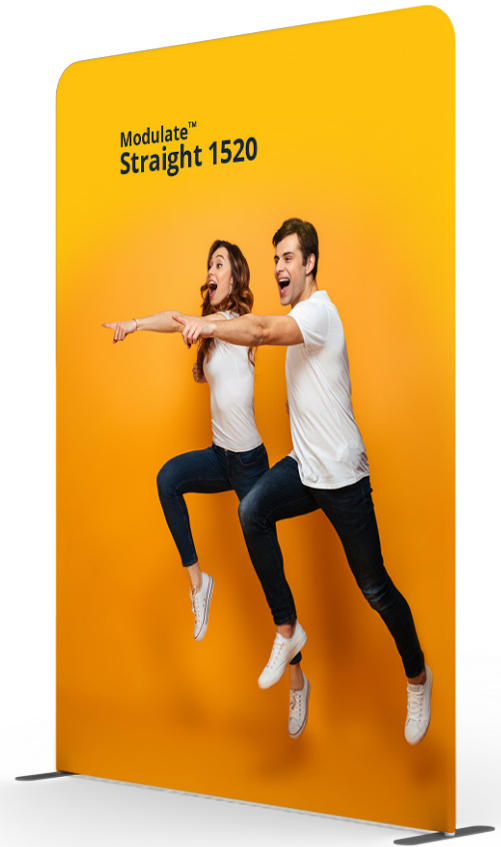
Double-sided tension fabric. Zip system



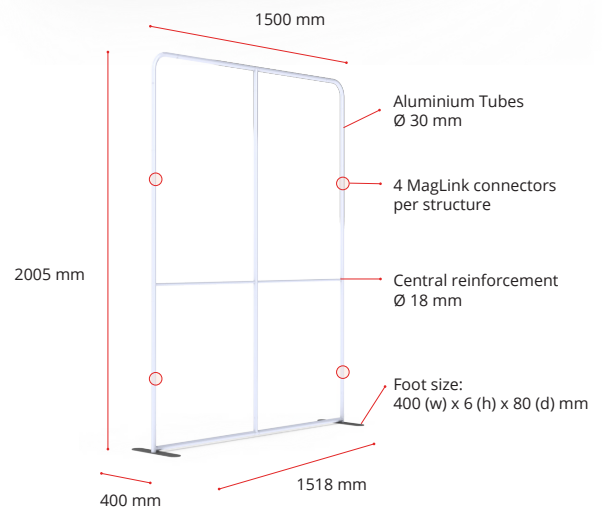
2 stabilising feet with Twist & Lock supplied with each frame



Modulate™ carry bag with dedicated compartments for the feet and graphics



Structure informations:	
Item	Modulate Straight 1520/1524
Code	MOD-S-1520/1524
Structure dimensions	1518 (w) x 2005 (h) x 400 (d) mm
Graphic visual area	1500 (w) x 1997/2382 (h) mm
Boxed dimensions	250 x 170 x 1060 mm
Structure weight	7.00 kg
Boxed weight	9.00 kg



OPTIONAL ELEMENTS:



Modulate half feet (pair)
MOD-HALF-FOOT-P
218 (w) x 6 (h) x 80 (d) mm



Spot LED Flood
LED-FLOOD-ARM-BDLK

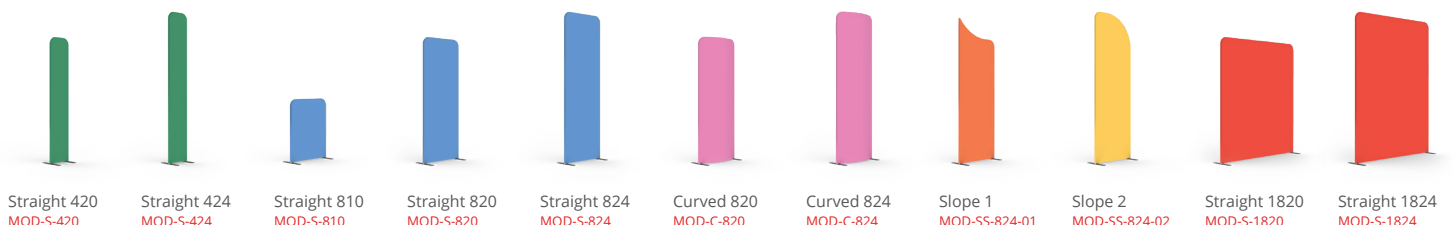


Spot LED Strip
LED-STRIP-ARM-BDLK



Universal light fitting kit
US901-C

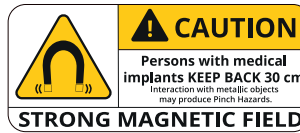
MIX & MATCH THE 11 MODULATE FRAMES :



Modulate™ Straight 1520/1524

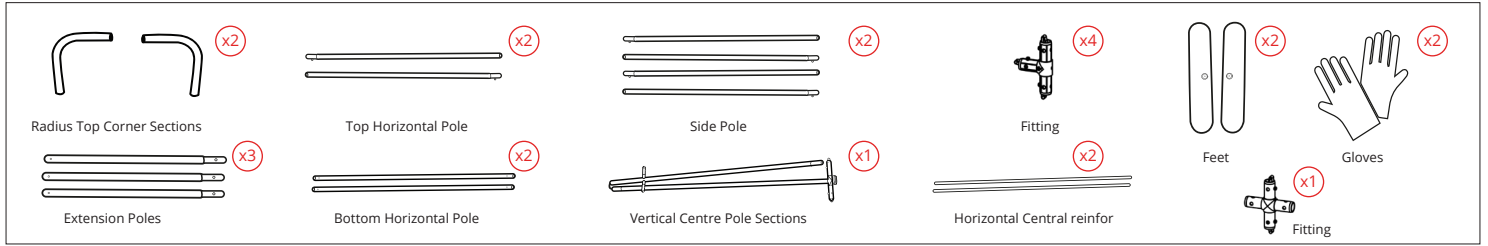
MOD-S-1520/1524

MOD-S-1520-HF/1524-HF

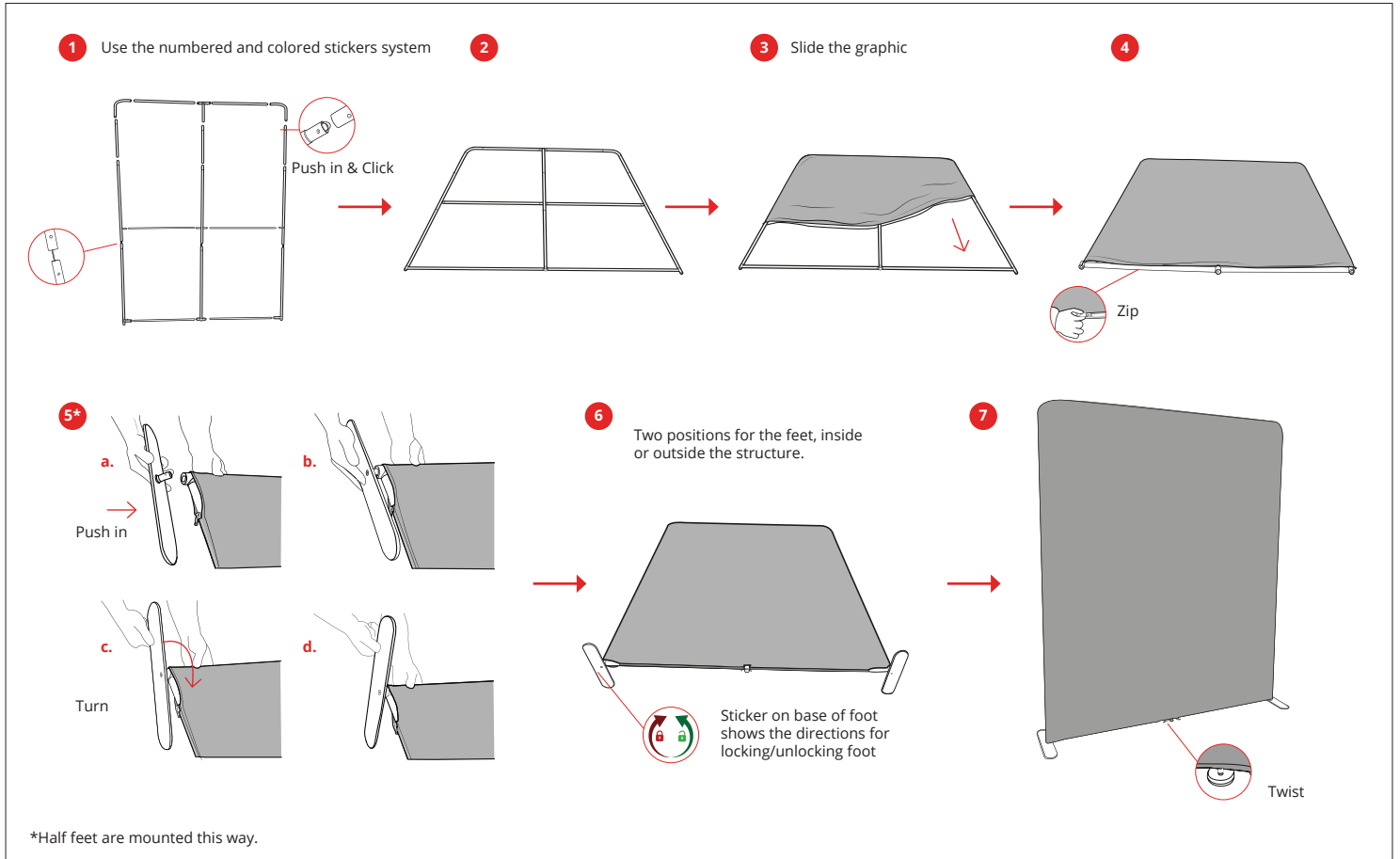


made in Poland

ELEMENTS

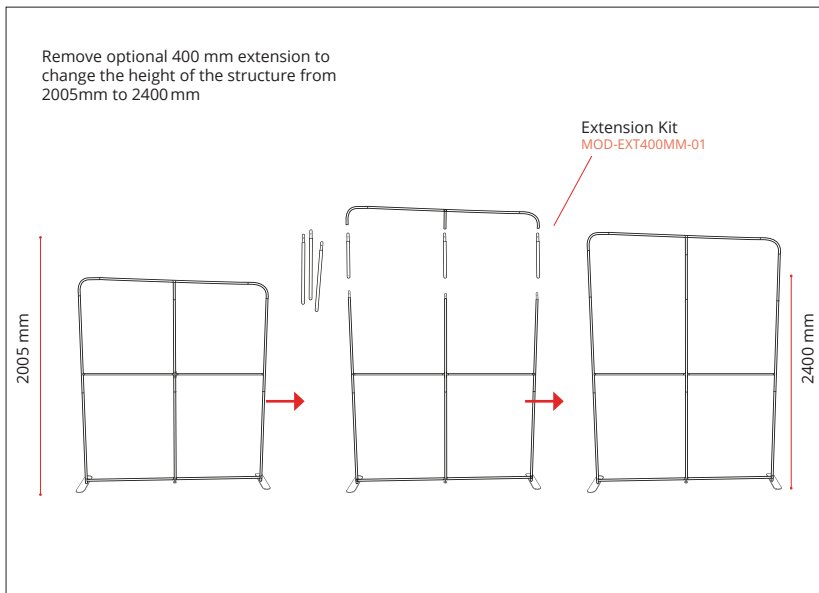


ASSEMBLY



RECONFIGURABLE HEIGHT

2005 MM → 2400 MM



CONNECTING MULTIPLE FRAMES

Remove one foot from second frame and align both frames on one foot

